

BONE RECONSTRUCTION



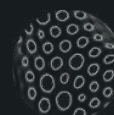
Frontal zygomatic
Low-profile insertion



Nasal projection
Design based on CPMH's anatomic library



Screws
The SLA treatment facilitates osteointegration



Topology Optimization
Calculation of structures subject to fatigue restriction



Abutments
Universal standard



Mandible
Internal trabeculation stimulates osteointegration

Watch the video



Bone reconstruction plates are indicated for:

- Osteotomized bone segments.
- Repositioning of segments.
- Maxilla/mandible reconstructions in cases with large fragments, complex fractures and loss of bone segments.



CPMH's titanium implants are **customized, lightweight and highly mechanically resistant.**

Developed by advanced software and manufactured using Titanium 3D Printing Technology, they offer high-fidelity simulations and modeling of the patient's anatomical parts.

With their rough surface, our implants allow for ideal osteoconduction and osteointegration, **providing both aesthetic and functional rehabilitation for the patient.**



Follow us on social media to learn more

#muchmorethananimplant

+55 (61) 98151 1637
cpmhdigital.com