



PREDICTABLE REHABILITATION OF EDENTULOUS  
PATIENTS WITH ATROPHIC JAWS IN ONE PROCEDURE



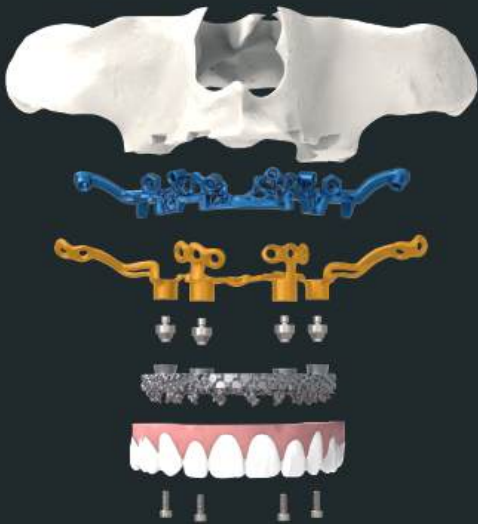
# CUSTOM LIFE



Learn more

[guchenkov@cpmhdigital.com](mailto:guchenkov@cpmhdigital.com) | (61) 3028 8858 | (61) 9 8151 1657 | [cpmhdigital.com](http://cpmhdigital.com)

Solution for **immediate loading rehabilitation** of edentulous patients with atrophic jaws.



## COUNT ON PREDICTABILITY

CustomLife makes patient rehabilitation and primary stability success predictable. Offer a safe and precise procedure to the patients by means of a **virtual 3D surgical planning** and **guided surgery**.



### IT COSTS PATIENTS LESS

Cover your fees and charge patients less by resorting to public healthcare or private medical insurance that may cover up to 100% of the device cost.

*Consult the situation in your country.*



### TECHNOLOGY AND INNOVATION

Implant designed based on a CT scan following the patient's anatomy, 3D-printed in titanium. Achieve lasting and predictable results with CPMH's cutting-edge technology.



### CLINICAL PRACTICITY

Immediate loading with high mechanical stability in a single guided procedure.



[guchenkov@cpmhdigital.com](mailto:guchenkov@cpmhdigital.com) | (61) 3028 8858 | (61) 9 8151 1657 | [cpmhdigital.com](http://cpmhdigital.com)

*Dental prosthesis (denture) not included and shown for illustrative purposes.  
Consult your dental technician.*